

CITY OF KELOWNA

BYLAW NO. 10134

Road Closure and Removal of Highway Dedication Bylaw (a portion of Clifton Road)

A bylaw pursuant to Section 40 of the Community Charter to authorize the City to permanently close and remove the highway dedication of a portion of Clifton Road near Highpointe Drive

NOW THEREFORE, the Municipal Council of the City of Kelowna, in open meeting assembled, hereby enacts as follows:

1. That portion of highway attached as Schedule "A" comprising 810 m² shown in bold black as Parcel A on the Reference Plan prepared by Bruce H. Davies, B.C.L.S. and completed on 18th day of December, 2008, is hereby stopped up and closed to traffic and the highway dedication removed
2. The Mayor and City Clerk of the City of Kelowna are hereby authorized to execute such conveyances, titles, survey plans, forms and other documents on behalf of the said City as may be necessary for the purposes aforesaid and to affix the Corporate Seal of the said City thereto.

Read a first, second and third time by the Municipal Council this

Adopted by the Municipal Council of the City of Kelowna this

Mayor

City Clerk

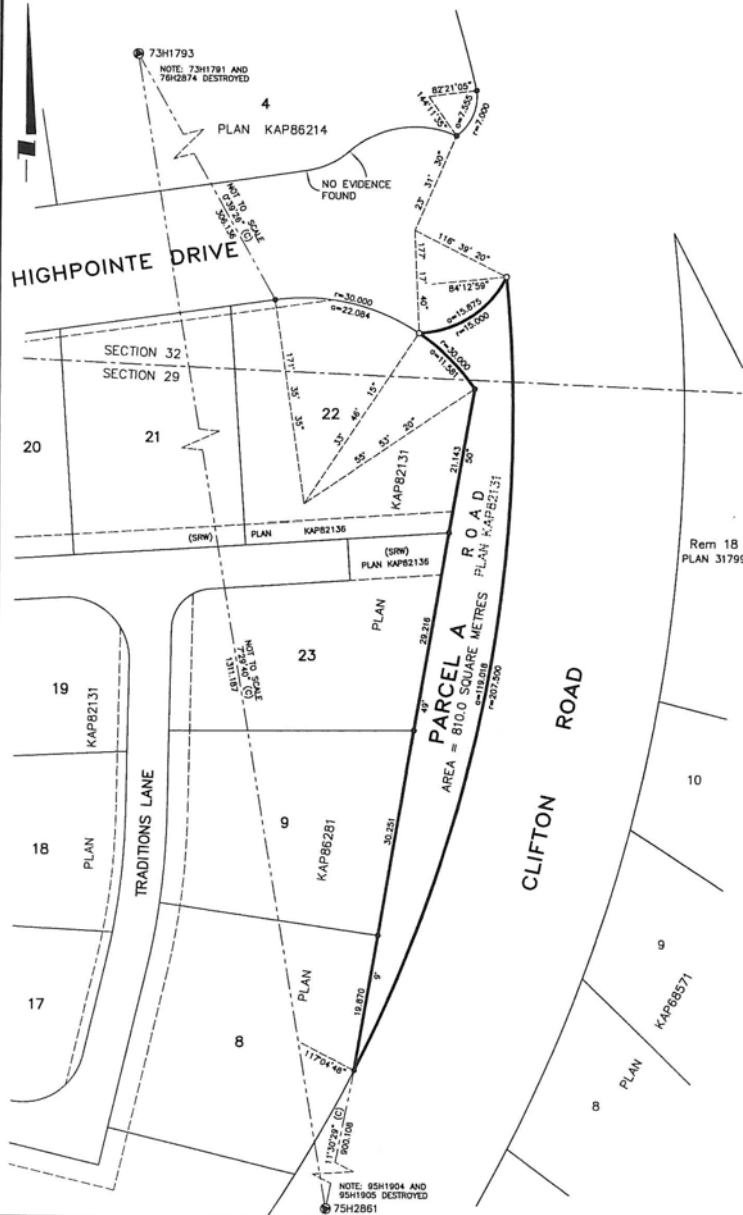
Schedule "A"

REFERENCE PLAN TO ACCOMPANY CITY OF KELOWNA ROAD CLOSURE AND REMOVAL OF HIGHWAY DEDICATION BY-LAW NUMBER 10134 OF PART OF CLIFTON ROAD SECTIONS 29 AND 32 TOWNSHIP 26 ODYD DEDICATED BY PLAN KAP82131

PURSUANT TO SECTION 40 OF THE COMMUNITY CHARTER AND SECTION 120 OF THE LAND TITLE ACT. BCGS 82E.093 SCALE: 1:400

10 5 0 10 25 50 METRES

THE INTENDED PLOT SIZE OF THIS PLAN IS 431.8mm IN WIDTH BY 558.8mm IN HEIGHT (C SIZE) WHEN PLOTTED AT A SCALE OF 1:400.



PLAN KAP _____
DEPOSITED IN THE LAND TITLE OFFICE AT KAMLOOPS, B.C.
THIS DAY OF _____, 20__

REGISTRAR

BOOK OF REFERENCE		
PARCEL	DESCRIPTION	AREA REQUIRED
A	ROAD SECTIONS 29 AND 32 TOWNSHIP 26 ODYD PLAN KAP82131	810.0 SQUARE METRES

LEGEND

INTEGRATED SURVEY AREA NO. 4 - CITY OF KELOWNA (NAD83 CSRS)

GRID BEARINGS ARE DERIVED FROM OBSERVATION BETWEEN CONTROL MONUMENTS 73H1793 AND 75H2861

THIS PLAN SHOWS HORIZONTAL GROUND-LEVEL DISTANCES EXCEPT WHERE NOTED, TO COMPUTE GRID DISTANCES, MULTIPLY GROUND-LEVEL DISTANCES BY COMBINED FACTOR 0.9999237

- ⊙ DENOTES CONTROL MONUMENT
- DENOTES STANDARD IRON POST FOUND
- DENOTES STANDARD IRON POST SET

THIS PLAN LIES WITHIN THE REGIONAL DISTRICT OF CENTRAL OKANAGAN.

I, BRUCE H. DAVIES, A BRITISH COLUMBIA LAND SURVEYOR, OF THE CITY OF KELOWNA, IN BRITISH COLUMBIA, CERTIFY THAT I WAS PRESENT AT AND PERSONALLY SUPERINTENDED THE SURVEY REPRESENTED BY THIS PLAN, AND THAT THE SURVEY AND PLAN ARE CORRECT. THE FIELD SURVEY WAS COMPLETED ON THE 18TH DAY OF DECEMBER, 2009. THE PLAN WAS COMPLETED AND CHECKED, AND THE CHECKLIST FILED UNDER #91500, ON THE 18TH DAY OF DECEMBER, 2009.

Bruce H. Davies

B.C.L.S.

T.E. Ferguson Land Surveying Ltd.
B.C. AND CANADA LAND SURVEYORS
404-1130 PANDOSY STREET, KELOWNA, B.C.
TELEPHONE (250) 763-3115
FAX (250) 763-0321

JOB # 18302

5:\home\joe\18_2009\JOB\75H\18302\18302_CLOSURE.dwg
DWG BY: JHG 18/10